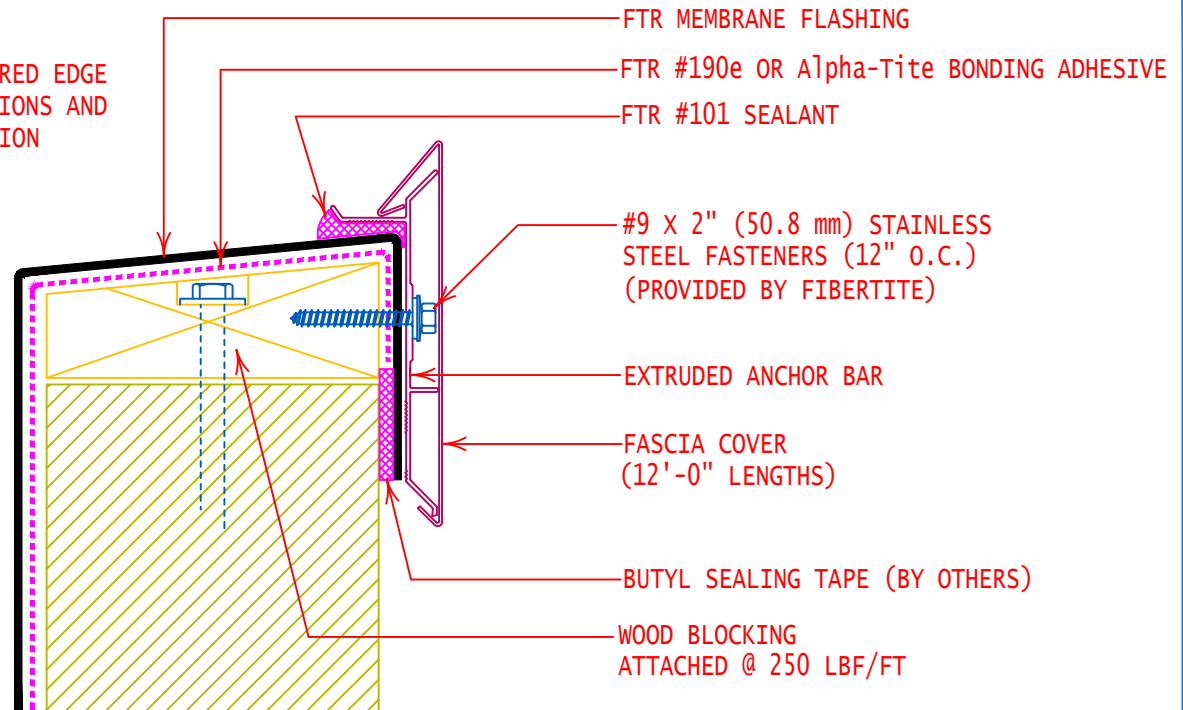
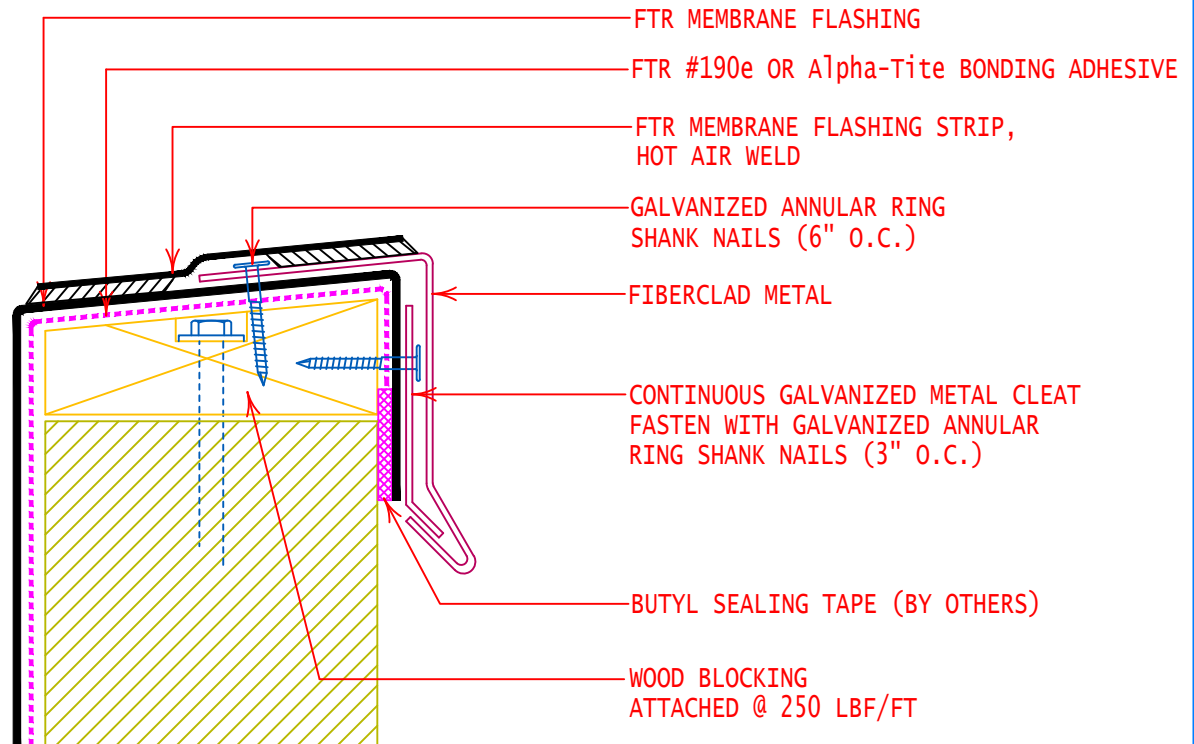


## FIBERTITE AT FASCIA SYSTEM (STANDARD FASCIA)

NOTE:  
INSTALL PRE-MANUFACTURED EDGE  
SYSTEM PER SPECIFICATIONS AND  
FIBERTITE'S INSTALLATION  
REQUIREMENTS.



## FIBERCLAD METAL



GENERAL REFERENCE:  
"FTR GS 01/21"  
APPLICABLE SYSTEMS:  
"FTR MA 01/21"  
"FTR AD 01/21"  
"FTR BA 01/21"

### ALTERNATE COPING / FLASHING

REVISES DETAIL

ALL PREVIOUS

ISSUE DATE

01-26-21

DRAWING NUMBER

FTR-DW6