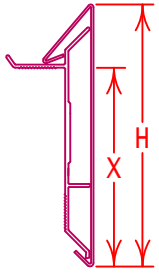
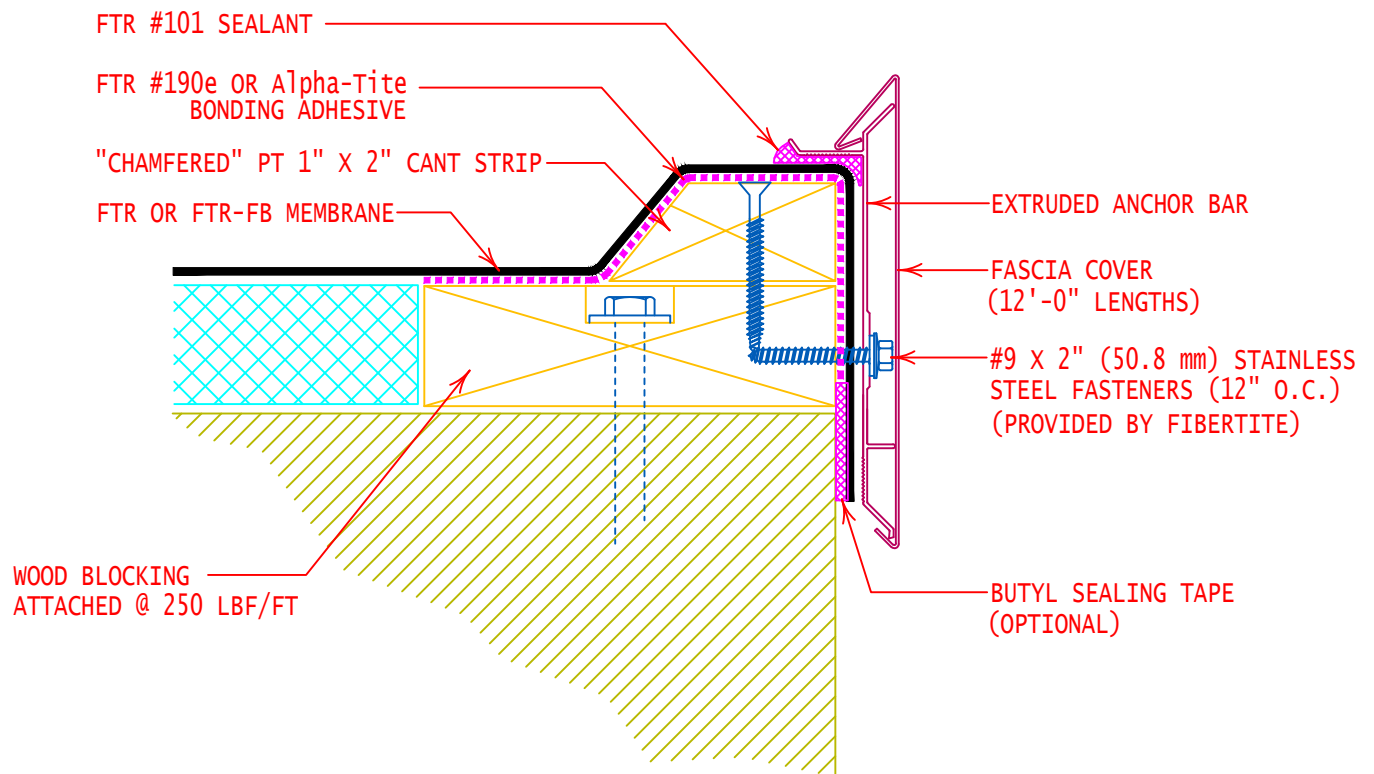


FIBERTITE AT FASCIA SYSTEM (STANDARD FASCIA)				
PRODUCT ID. NO.	H DIMENSION	X DIMENSION	NAILER COVERAGE	
F-2040	4" (101.6 mm)	2-3/4" (69.9 mm)	1 NAILER	
F-2055	5-1/2" (139.7 mm)	4-1/2" (108.0 mm)	2 NAILERS	
F-2070	7" (177.8 mm)	5-3/4" (146.0 mm)	3 NAILERS	
F-2085	8-1/2" (215.9 mm)	7-1/4" (184.2 mm)	4 NAILERS	
FM APPROVED 1-645 / MIAMI DADE APPROVED				

NOTE:  
INSTALL PRE-MANUFACTURED EDGE  
SYSTEM PER SPECIFICATIONS AND  
FIBERTITE'S INSTALLATION  
REQUIREMENTS



GENERAL REFERENCE:  
"FTR GS 01/21"  
APPLICABLE SYSTEMS:  
"FTR MA 01/21"  
"FTR AD 01/21"  
"FTR BA 01/21"

### FIBERTITE AT FASCIA SYSTEM (RAISED CANTED EDGE)

REVISES DETAIL

ALL PREVIOUS

ISSUE DATE

02-23-21

DRAWING NUMBER

FTR-DE5